

The background of the entire page is a dark, almost black, field filled with vibrant, ethereal blue flames. The flames are wispy and fluid, with some brighter, more intense blue and white highlights, creating a sense of movement and heat. They appear to be rising and swirling, filling the lower two-thirds of the page.

carwash

Boilers, inc.

Your **One-Stop Source** for all your floor and water heating solutions

Boilers

Water Heaters

Water Softeners

De-Icing Systems

System Engineering

Technical Support

Why Carwash Boilers, Inc.?

Carwash Boilers is your **One-Stop Source** for all your car wash floor and water heating solutions. From concept to installation, Carwash Boilers provides you the expertise for your existing or new car wash business. Facility owners, new site construction contractors, and product distributors turn to Carwash Boilers for complete equipment and industry experience.

Your One-Stop Source For:

- Equipment and Components
- Engineering Design
- Technical Support
- On-Site Consultation
- Equipment and Facility Set-Up Expertise
- Complete Pre-Piped Packaged Systems
- Systems Design and Applications
- Facility Site Assessments

- Models from 50,000 to 1.5 million BTU
- Small footprint, quiet operation
- Easy, no-hassle installation and usability
- Easily modify settings
- Specifically designed to meet your needs
- Most models in stock
- Standard efficiency also available

Complete Pre-Plumbed Systems Also Available!

GO GREEN!
Reduce gas consumption **up to 51%** by switching to a high efficiency boiler.

98.6%
efficient



Go Green with a High Efficiency Knight Boiler System from Carwash Boilers, Inc.

The KNIGHT® Heating Boiler is a champion of high efficiency. With a 93% Annual Fuel Utilization Efficiency (AFUE) rating, you can be rest assured that 93¢ out of every energy dollar goes directly into running your car wash heating system. That's well above ENERGY STAR standards, and its efficiency goes up to an astounding 98.6% in low-temperature applications and up to a 51% reduction in gas consumption!

Compact and attractive—not to mention amazingly quiet—KNIGHT boilers fit in small spaces and tight equipment rooms where most other boilers will not.

The unique SMART SYSTEM™ Operating Control makes the KNIGHT simple to program, so you can maximize efficiency for your specific facility needs. With advanced self-diagnostic abilities and an easy-to-read LCD display, the KNIGHT lets you know if service is necessary, and all controls are password protected.

Carwash Boilers Makes it Easy!
Carwash Boilers can design your system to get the best efficiency to meet your heating demands. Count on Carwash Boilers for total installation set-up expertise and tech support.



KNIGHT HEATING BOILER **We supply all Knight models including service and support**



Water Heaters



Navien Wall Mount, Low Flow Tankless Water Heater



98%
condensing

- Enhanced safety with dual microprocessors
- Optimal and stable combustion with APS and GPS
- Three-phase, pre-mixed burner
- Leak detection
- Eco Navien technology

For low flow applications, a **tankless water heater** may be for you.

Squire
Indirect Water Heater



95%
efficient

Heat Water and Floors with One Unit!

The Squire® Indirect Water Heater uses the power and efficiency of your building's heating boiler to also generate hot water for other car wash demands, such as de-icing systems. The efficiency of the heating boiler could be as much as 20% higher than a direct-fired tank-type water heater. So, why not use that efficiency to "indirectly" provide hot water for all car wash applications?

- Six models from 30 to 119 gallons
- 100% stainless steel construction
- 316L passive stainless steel tank
- 304L high capacity stainless steel coil
- Factory supplied tank sensor

SHIELD
COMMERCIAL WATER HEATER

HIGH FLOW

96%
efficiency for life

- 5 models from 150,000 to 500,000 BTU/HR
- No efficiency loss from lime scale
- Virtually silent operation
- Advanced SMART SYSTEM™
- Venting up to 100 feet



**SMART
SYSTEM**

Complete Pre-Plumbed Systems Also Available



98%
efficient

ARMOR
CONDENSING WATER HEATER

Only Replace Individual Component as Needed

- 8 models from 150,000 to 800,000 BTU
- Up to 20GPM at 80° rise per unit
- You can sequence multiple units if necessary
- Advanced (Neg/Reg) sealed combustion technology
- Fully modulating combustion with 5:1 turndown
- 20% to 100% firing rate depending on demand
- Match one or more water heaters with inputs ranging from 150,000 to 800,000 with one or more storage tanks in a wide variety of sizes

Water Softeners and RO Systems



up to **80** GPM
continuous

Pre-engineered and packaged to meet most commercial and light industrial applications.

**Better Performance
at a Lower Price!**



Free Standing Reverse Osmosis Systems



Also available as a wall mount unit



RO SYSTEM:

- High efficiency RO production – less reject water, reduced operating costs
- Digital TDS and temperature display
- SS membrane housings
- Easy to view/access – panel mounted pressure & flow meters
- Auto membrane flush
- Low inlet water/safety shut-off (adjustable) wth automatic RO system re-start (adjustable)

WATER SOFTENER:

- 1.0" and 1.25" include by-pass valve assemblies and inter-connecting manifold (2-tank system only) reduces time and material cost to install softener
- Metered, high efficiency performance
- Designed for easy maintenance and servicing
- Processor-based control provides valuable operation and historical information, including:
 - Total water volume used
 - Volume remaining until next regeneration
 - Number of days and water used since last regeneration
 - Current flow rate

Complete Pre-Plumbed-Ready and Skid-Mounted Systems



De-Icing Systems



Pre-Assembled Manifolds

- Color anodized for hot and cold water
- Non corrosive aluminum construction
- Heavy duty nickel plated valves
- Easy hook-up and installation

Carwash Boilers will work with you to design the best manifold solution for your de-icing needs.

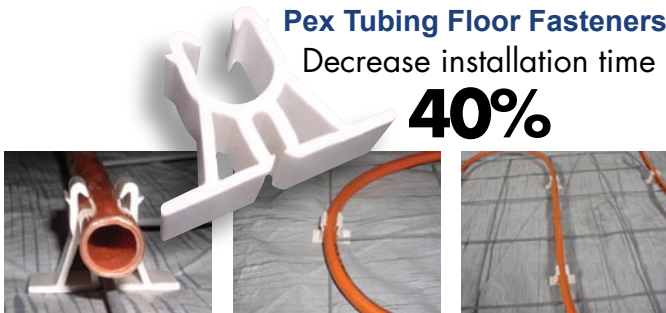
Carwash Boilers can design your complete de-icing system for your car wash business along with supplying all of the materials and components necessary for your particular application.

Carwash Boilers is also your single source for installation, technical support, and equipment and facility set-up expertise.

Pex Tubing Floor Fasteners

Decrease installation time up to

40%



Pex Tubing

- 25 year warranty
- Durable 1/2" tubing
- Additional sizes available
- Also use for water supply lines
- No prep required for manifold connection



Manifold Boxes

- Heavy duty composite construction
- Will not rust, corrode, or deteriorate
- Ready to install
- Easy lid removal for manifold access
- Larger capacity makes it easy to work in
- Inslab or landscape installation



Control Panels

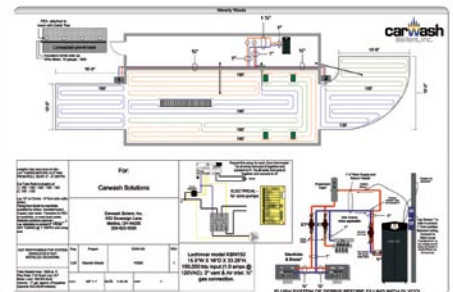
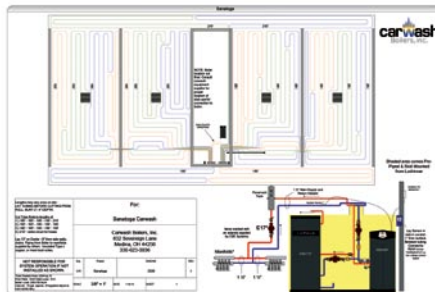
- Automatic or manual controls
- Heavy duty composite construction
- UL waterproof enclosure
- Digital thermostats
- Plug and play

Total Systems Control at Your Finger Tips



Site Facility Engineering and Systems Design

- Technical systems schematics designed for your specific facility needs
- High-tech software engineered
- Will work with your architect
- Fast turnaround



Boiler	KNIGHT	Other
Thermal Efficiency	98%	80%
BTUs Per Hour	399,999	500,000
Cost Per Therm (incl. taxes)	\$1.00	\$1.00
Hours Per Day	8.00	8.00
Days Per Winter	100	100
Hours Per Year	800	800
Yearly Operational Cost	\$3,265	\$5,000
Seasonal Fuel Cost Savings	\$1,735	
List Price of Boiler	\$11,337	\$6,013
Venting Material Installed	\$300	\$800
TOTAL	\$11,637	\$6,813
Years of Payback	2.78	
Savings After:		
5 Years	\$4,463	
10 Years	\$16,830	
15 Years	\$33,024	
3% Inflation		

Water Heater	High Efficiency	Other
Thermal Efficiency	98%	80%
Gallons Per Day	9,000	9,000
Temperature Rise	80	80
Cost Per Therm	\$1.00	\$1.00
Days Per Year	300	300
Yearly Operational Cost	\$18,184	\$22,275
Yearly Fuel Cost Savings	\$4,091	
Heater Cost	\$13,500	\$5,500
Venting Material Installed	\$300	\$1,000
TOTAL	\$13,800	\$6,500
Years of Payback	1.78	

Payback Calculator

A 500,000 BTU Heater Pays Back in 1.78 Years!



632 Sovereign Lane | Medina, Ohio 44256 | P: 330.623.0036 | F: 206.203.2829
www.CarwashBoilers.com



Carwash Boilers is your certified Lochinvar source exclusively for the car wash industry